



YPAC

CONNECTING PIPELINERS

BEYOND LAND RIGHTS

Access to land through building trust



YPAC

YOUNG PIPELINERS ASSOCIATION OF CANADA

Brittney Ramsay – President

brittney.ramsay@brittland.com

@RamsayBritt 

Dayna Morgan – Vice President

dayna.morgan@brittland.com

@daynaamorgan 

www.brittland.com

@_brittland_

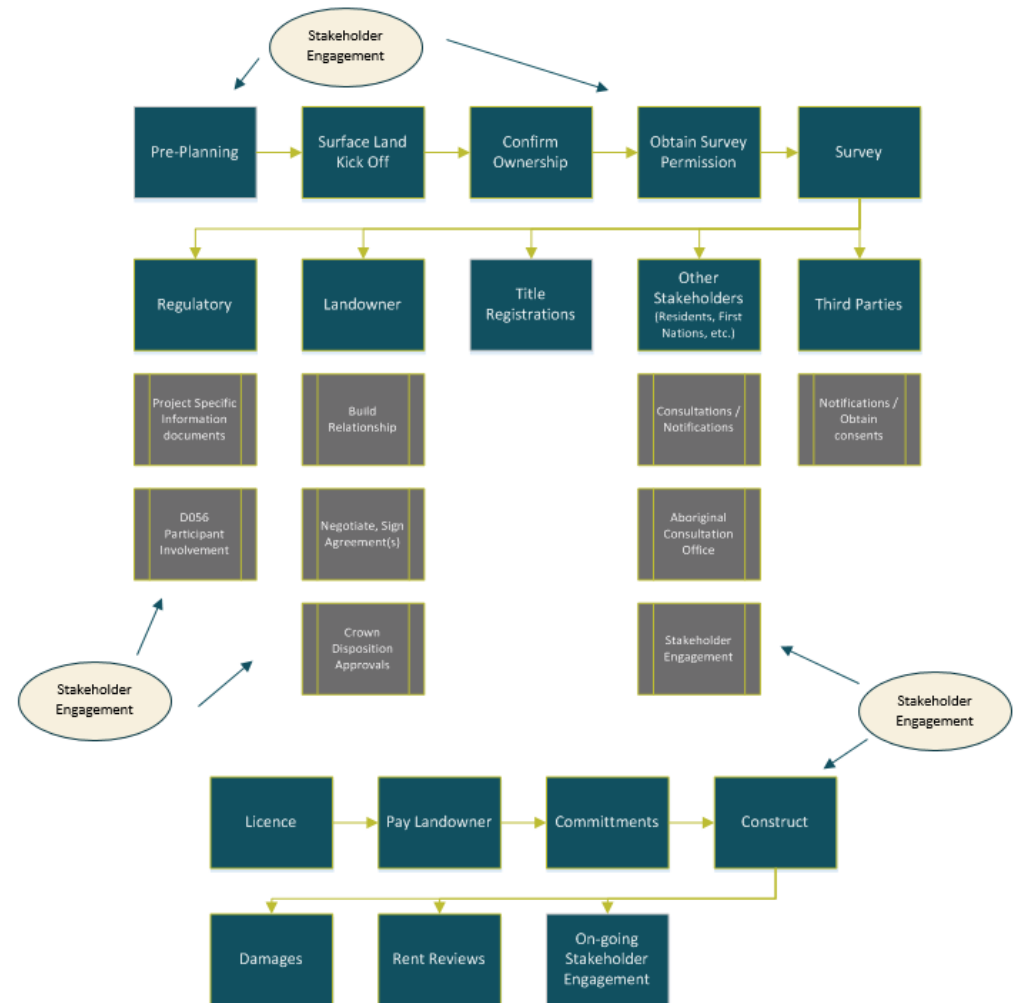


YouTube

Land 101

- What is Land?
- Obtaining access to land
- Regulatory requirements
- Who is a Land Agent?
- Stakeholder Engagement
 - Who?
 - Why?

Surface Land Acquisition Road Map



Where are we now - transition

- Changing Expectations
 - Transactional to meaningful
 - The landscape has changed... regulatory, social awareness, expectations, media attention, access to information, people caring
- Stakeholder Rights vs Stakeholder Influence

Stakeholder Engagement

- Stakeholder engagement is an art not a science
- A Checkbox
- Minimum requirements
- Predictability comes with: access to information, upfront planning, stakeholder mapping, clear scope/goal identification, no blanket approach

P
E
S
T
E
L



Where are we going – do you want to exist in 5 years?

- Golden Rule(s) for engagement
 1. Consult early and often
 2. Plan
 3. Communicate
 4. Remember they are only human
 5. Relationships are key
 6. Simple, but not easy
- Doing the same thing produces the same result
- Engagement is a part of every step in an asset life cycle
- Engage – learn – adapt – engage

Build TRUST

Thank you

www.brittland.com

Brittney.Ramsay@brittland.com

Dayna.Morgan@brittland.com